

# AutoGate Installation guide for Windows OS

## 1. DOWNLOAD AUTOGATE INSTALLER

1) Download *AutoGate* installer from <http://cgworkspace.cytogenie.org/GetDown2/AutoGate.exe>

2) AutoGate installer will download.

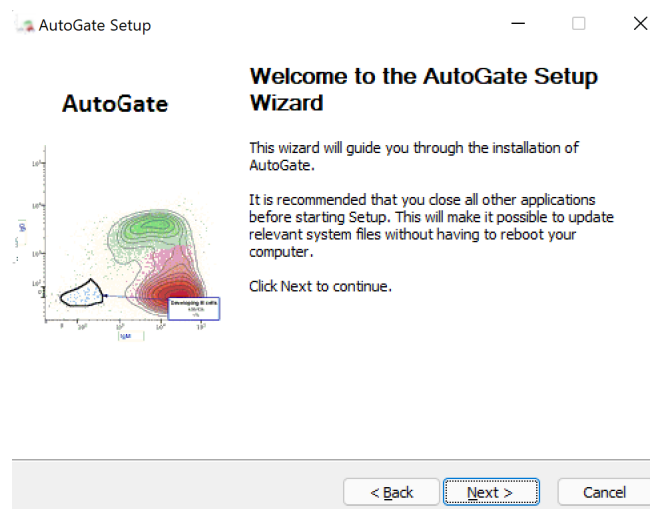
<input type="checkbox"/>	Name	Type	Size
✓	AutoGate.exe	Application	3,226 KB

## 2. LAUNCH AUTOGATE INSTALLER

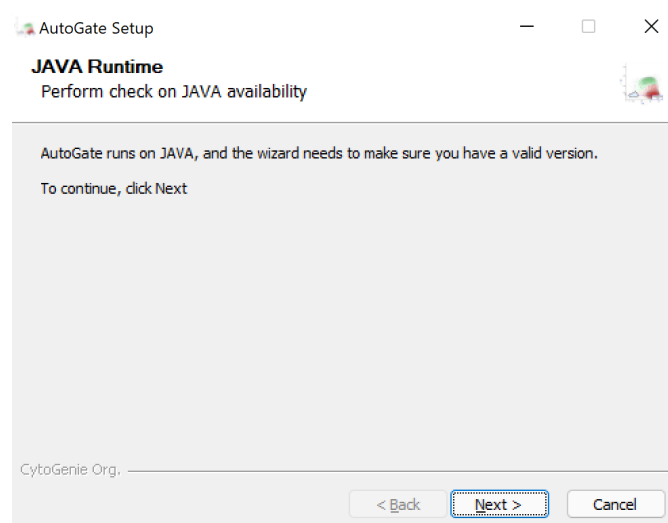
1) Open the downloads folder and click **AutoGate.exe**

2) In the **User Account Control** window, say **Yes** to allow **AutoGate** to make changes to your computer.

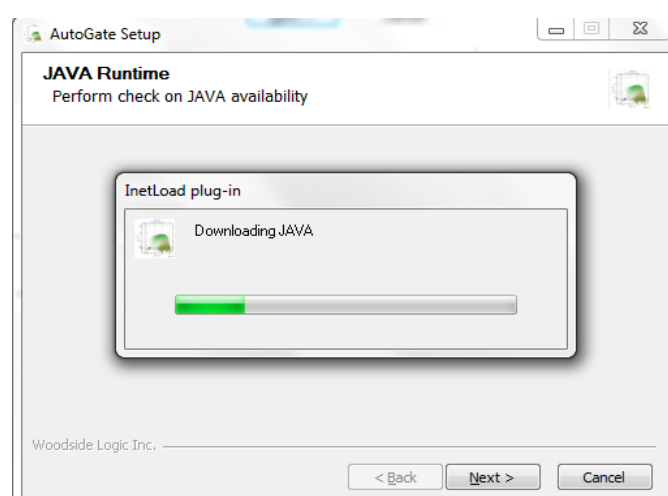
3) **AutoGate Setup wizard** will be shown



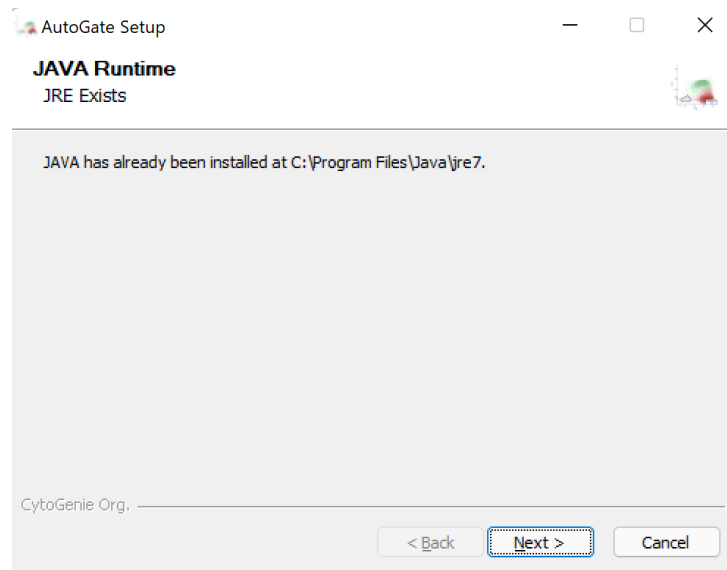
4) Click **Next** and the installer will first check for Java, one of the pre-requisites for AutoGate.



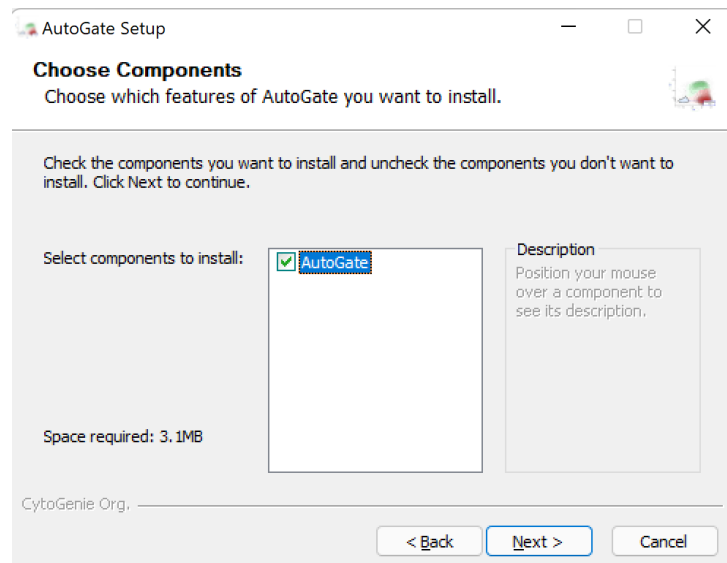
5) If Java is not available, then the installer will download it for you.



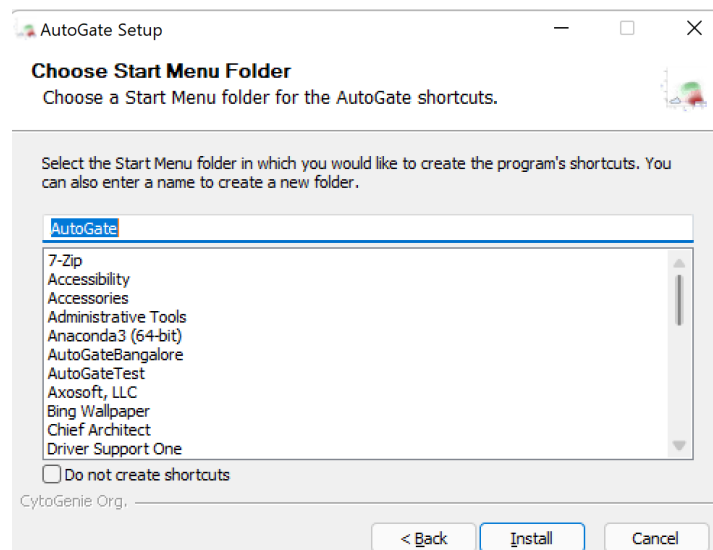
6) If Java exists, then AutoGate will confirm the location.



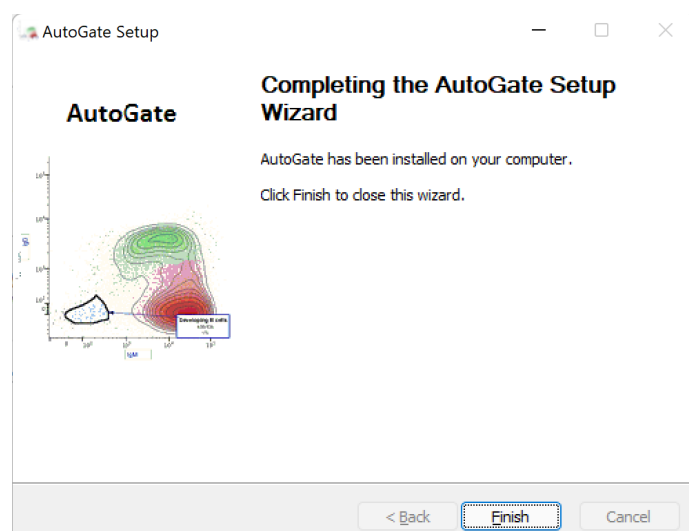
7) Click **Next** with AutoGate selected



8) Prompts to select the start menu folder. As no change is needed, click **Install**

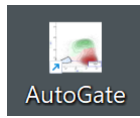


9) Once *AutoGate* is successfully installed, it will display the below confirmation

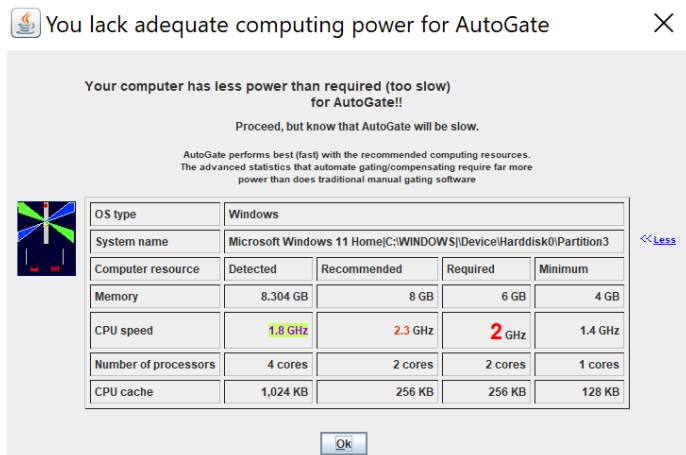


### 3. LAUNCH AUTOGATE

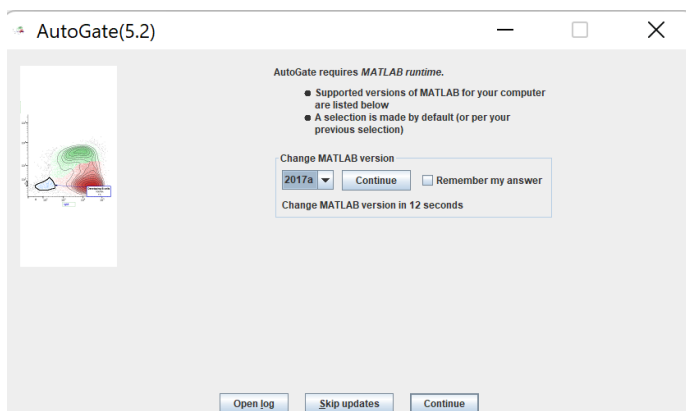
- 1) Click on the desktop shortcut for AutoGate and it will launch AutoGate



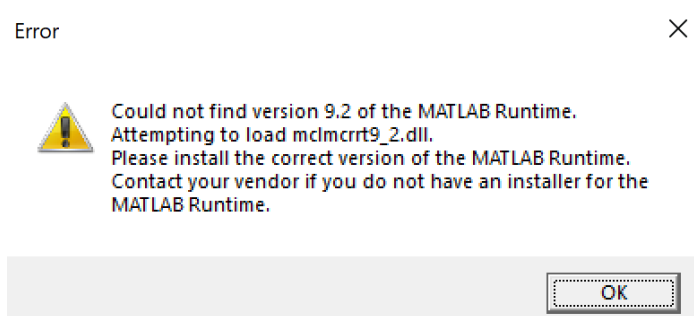
- 2) AutoGate will check for computer capacity and warn if any of the requirements are not met.



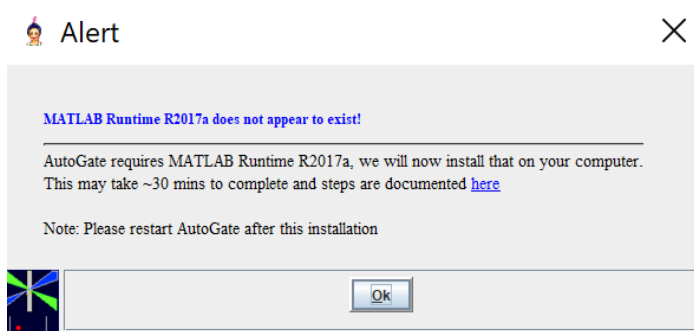
- 3) Click **Continue**



- 4) Alerts that MATLAB Runtime version 9.2 (2017a) is not available. As this is a Matlab alert, we don't have control over the display to customize the message.

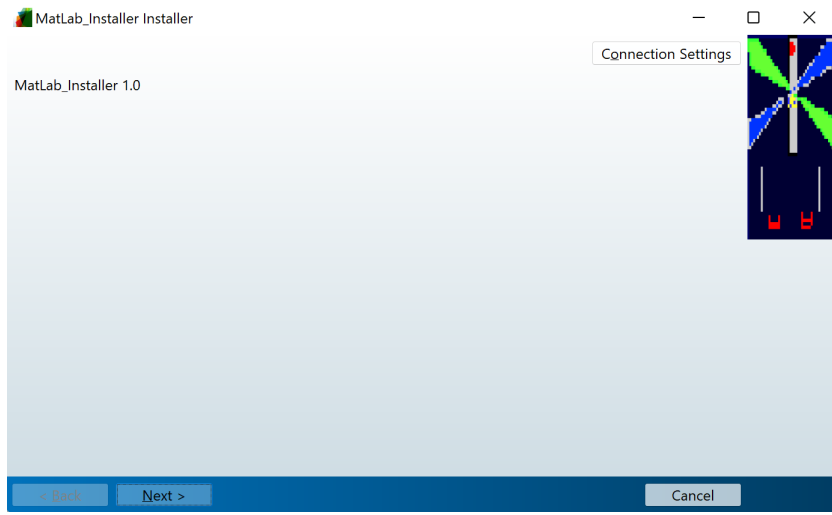


- 5) Followed by a reconfirmation from AutoGate that Matlab 2017a Runtime could not be detected and that it will attempt to install the software on your computer. Click OK

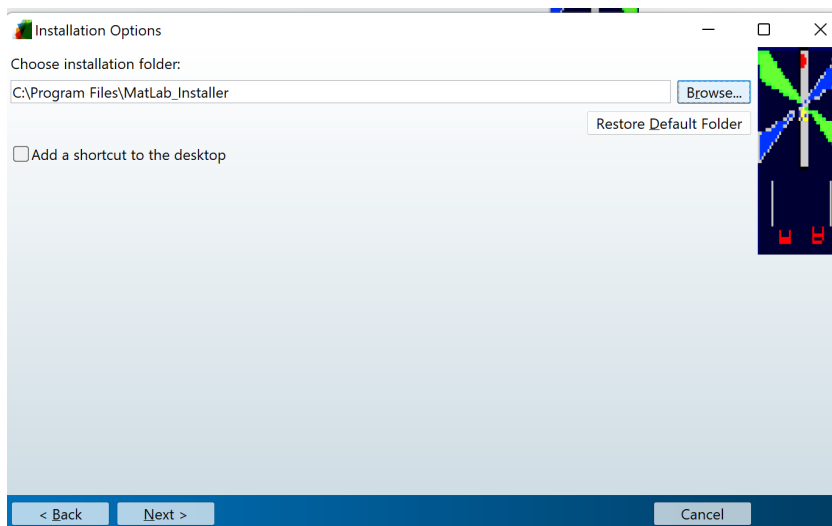


- 6) In the **User Account Control** window, say **Yes** to allow InstallMatlabInstaller2017a.exe to make changes to your computer.

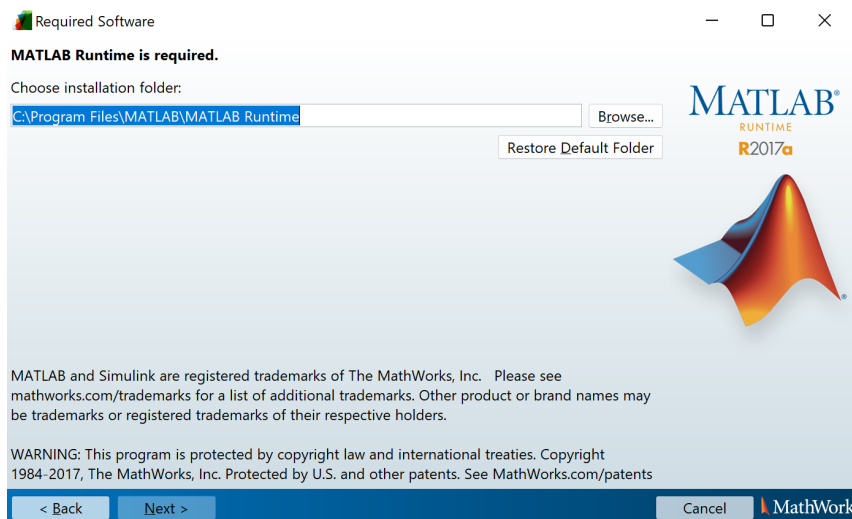
7) Matlab Installer shows up. Click **Next**



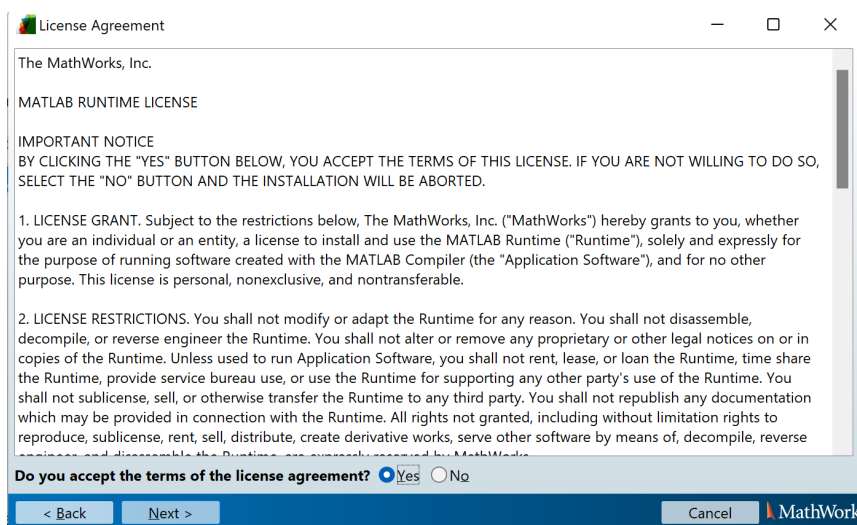
8) Choose or confirm the installation folder



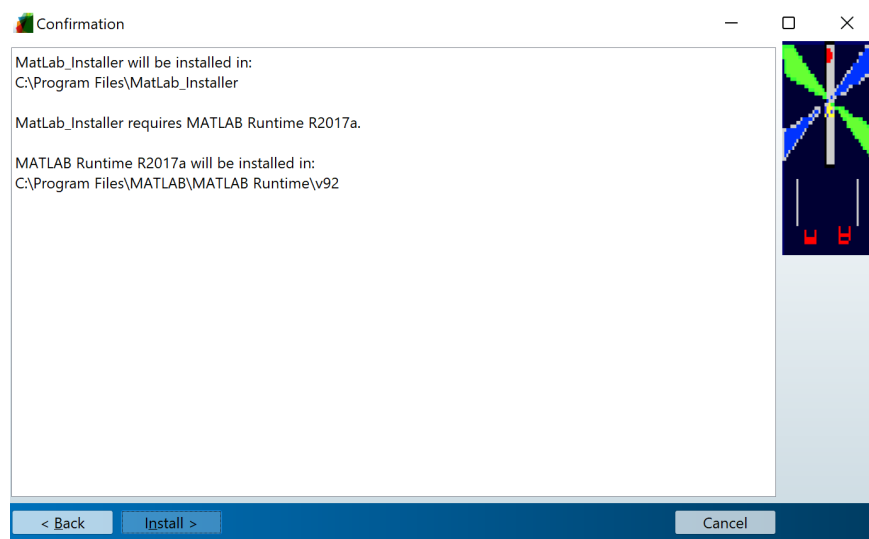
9) Choose or confirm the installer folder for Matlab Runtime



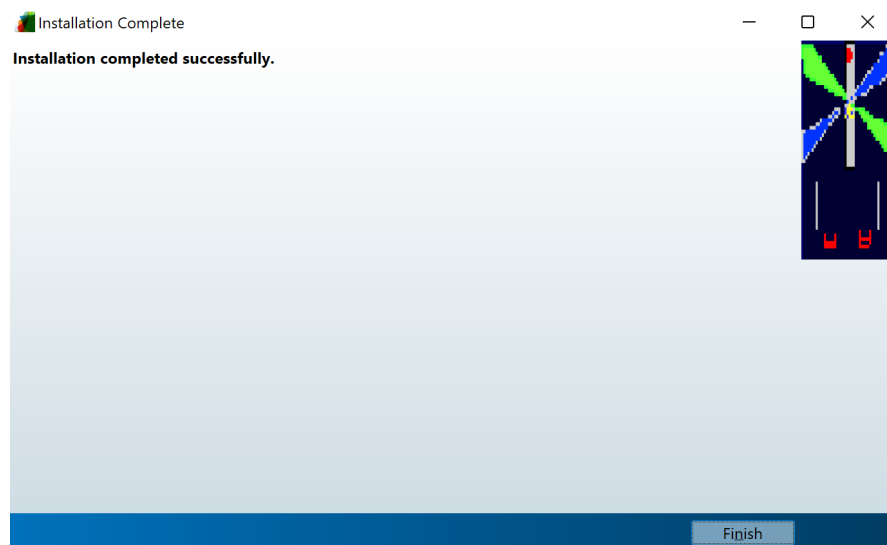
10) Click **Yes** to Agreement



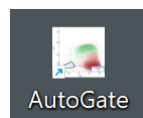
11) Confirmation on the selected locations. Click **Install**



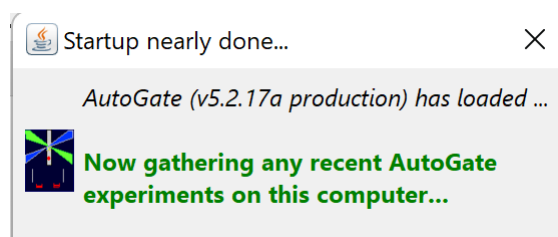
12) It takes ~ couple of mins to install and confirms with a success message. Click **Finish**.



13) Re-launch **AutoGate** from the Desktop shortcut



14) Takes **~30 seconds** before the first *AutoGate* launching window shows up. Subsequent launches will be faster.



15) *AutoGate* launched

